

ADDI-DATA GmbH Dieselstr.3 D-77833 Ottersweier ☎: 07223/9493-0	Titel: <div style="text-align: center;">ADDIDATA Compatible DLL PCIe3121</div>	<div style="text-align: center;">Q</div> <div style="text-align: center;">Blatt 1 / 3</div>
---	--	---

1. INTRODUCTION

This document introduces how to use ADDIDATA Compatible DLL.

2. INSTALLATION

In order to use this DLL, there are two possibilities:

When only 1 board type is used:

- Copy the DLL in C:\Windows\SysWOW64 folder

OR

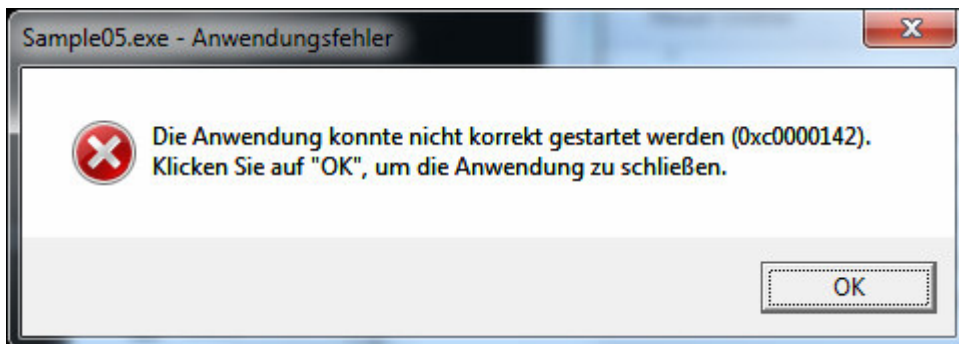
- Copy the DLL in the same directory as the <program>.exe

When more than 1 board type is used: (-> More than one ADDIDATA.dll)

- The DLL must be copied in the same directory as the <program>.exe

3. PROPERTIES

The DLL can't be open more than one time. The following message will appear in this case.

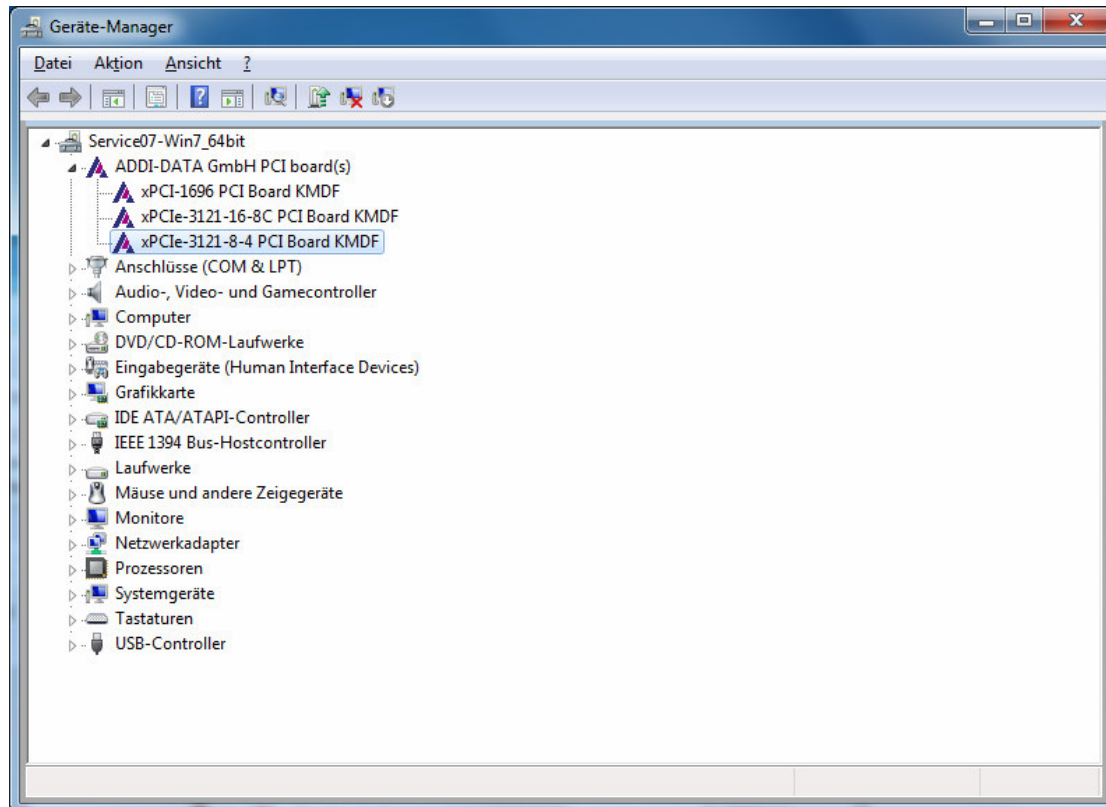


ADDI-DATA GmbH Dieselstr.3 D-77833 Ottersweier ☎: 07223/9493-0	Titel: <h1 style="text-align: center;">ADDIDATA Compatible DLL PCIe3121</h1>	<div style="text-align: center; font-size: 2em; font-weight: bold;">Q</div> <div style="text-align: center;">Blatt 2 / 3</div>
---	---	--

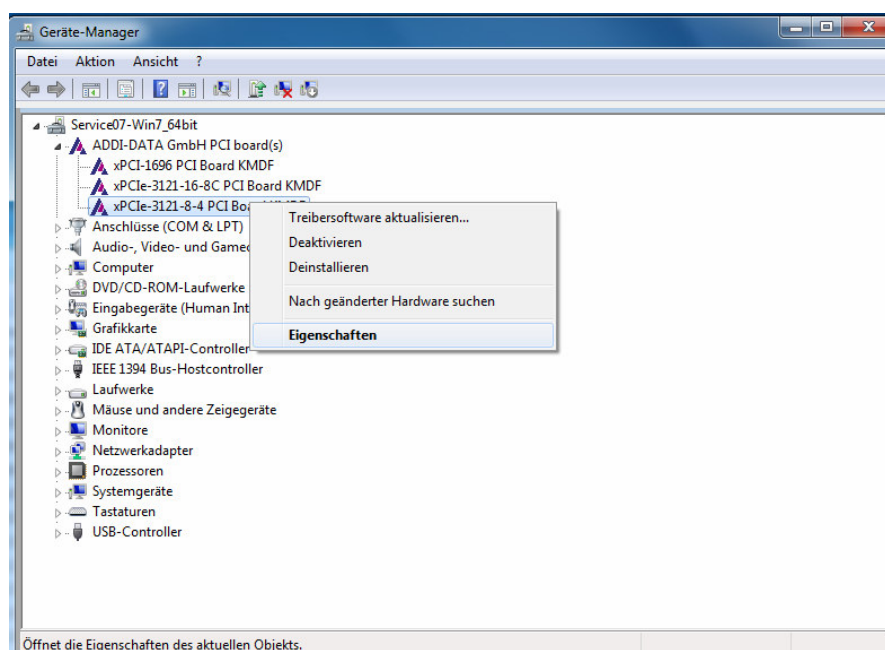
4. PCIe3121 input mode selection

In order to select if PCIe3121 analog input mode is SINGLE_ENDED or DIFFERENTIAL.

- Open windows device manager

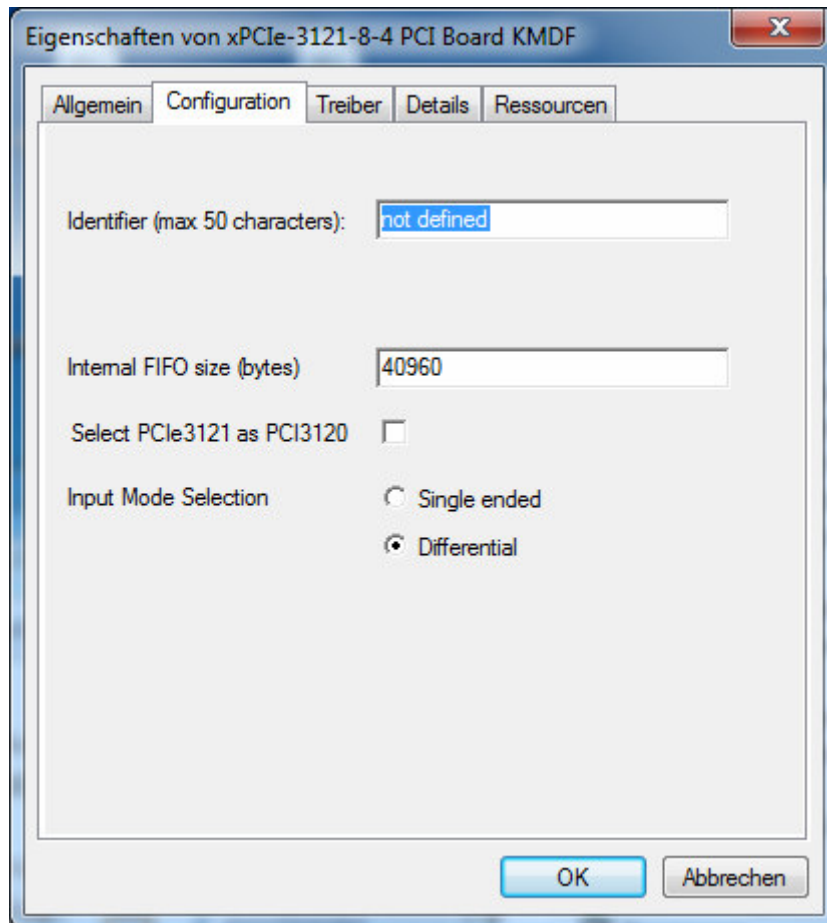


- Select board properties:



ADDI-DATA GmbH Dieselstr.3 D-77833 Ottersweier ☎: 07223/9493-0	Titel: <div style="text-align: center;">ADDIDATA Compatible DLL PCIe3121</div>	<div style="text-align: center;">Q</div> <div style="text-align: center;">Blatt 3 / 3</div>
---	--	---

- Select configuration tab



- Select input mode and then click ok.

Note: The default input mode is differential.